



Locate the two cross legs



Assemble as shown

A white metal frame is shown on a light-colored wooden floor. The frame consists of several interconnected bars. A small pile of screws is on the floor near the center of the frame. The text "Remove the screws" is overlaid on the image in white font.

Remove the screws

Locate the inner pipe



Remove the Height Adjustment Control Collar



Pull up the inner pipe



Extend Fully



Line up holes
on outer pipe
with cross legs



Replace all
4 screws and
tighten



Slide base
cover on
as shown



Replace
Height Adjustment
Collar and
Tighten as Shown



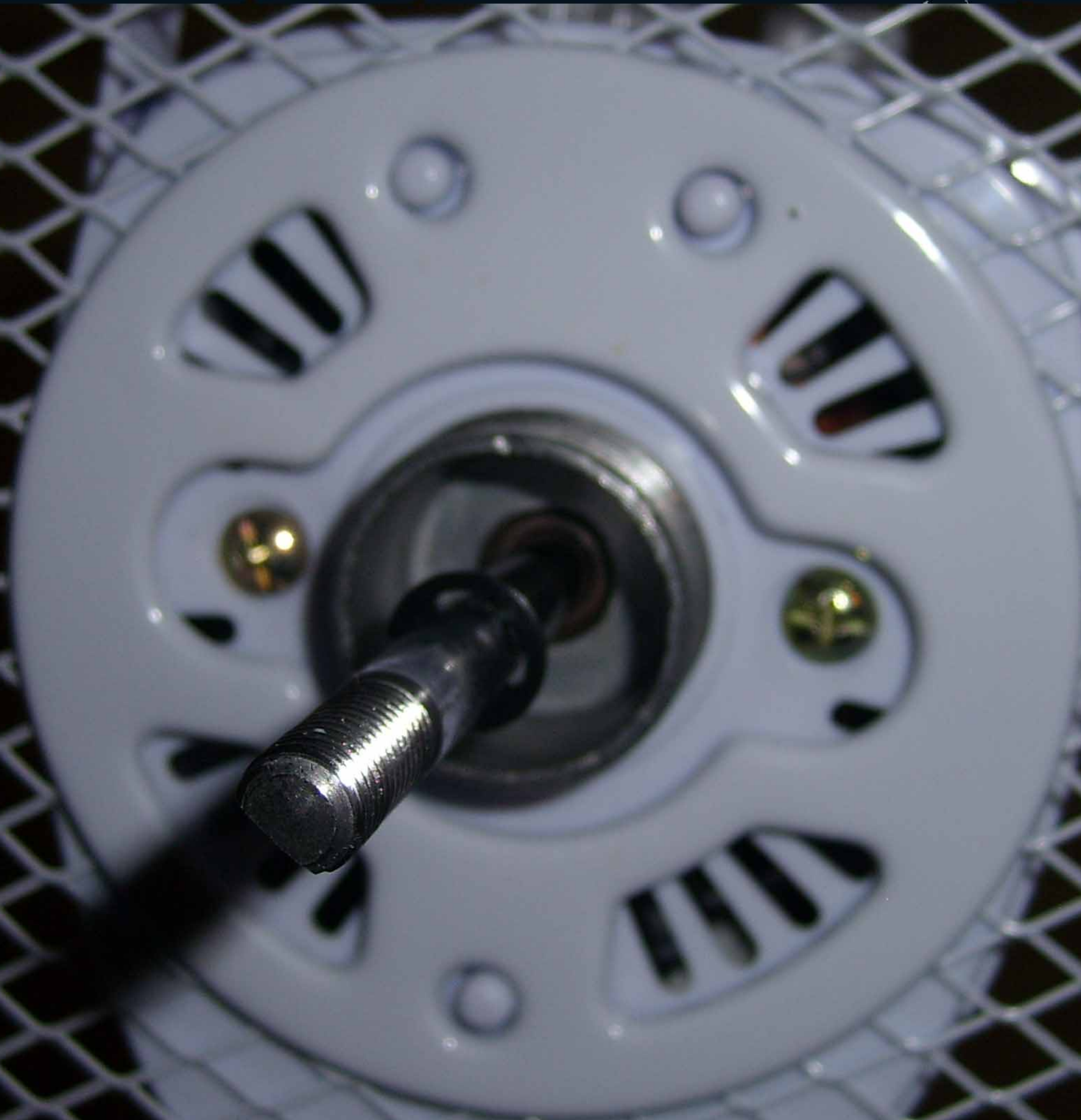


Place Motor Head onto Inner Pipe and Tighten Set Knob. (make sure the set knob is loosened enough to slide on)

Remove Grill Nut



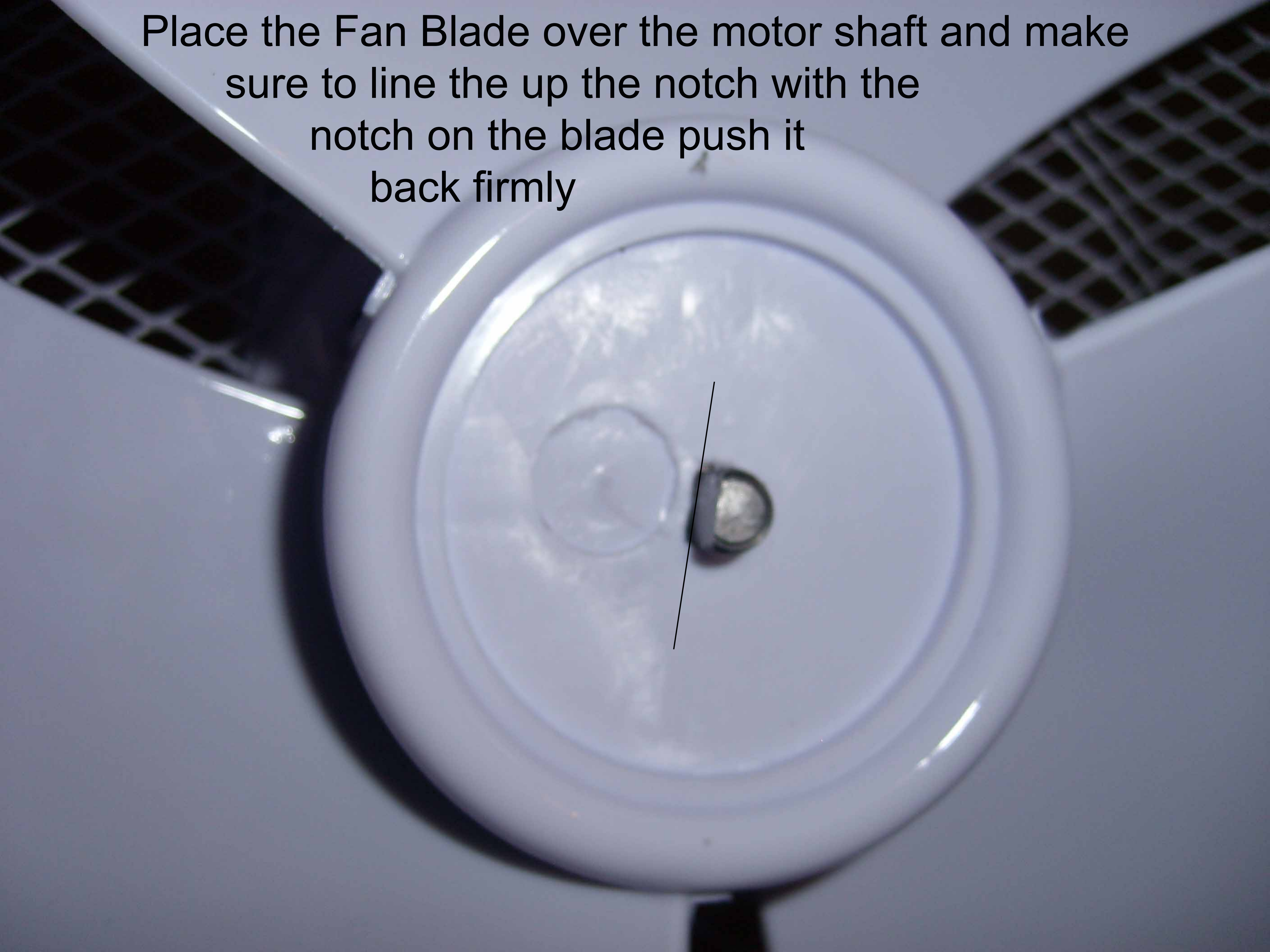
Place Rear Grill onto Fan Motor and Line Up with the 3 Positioning Knobs

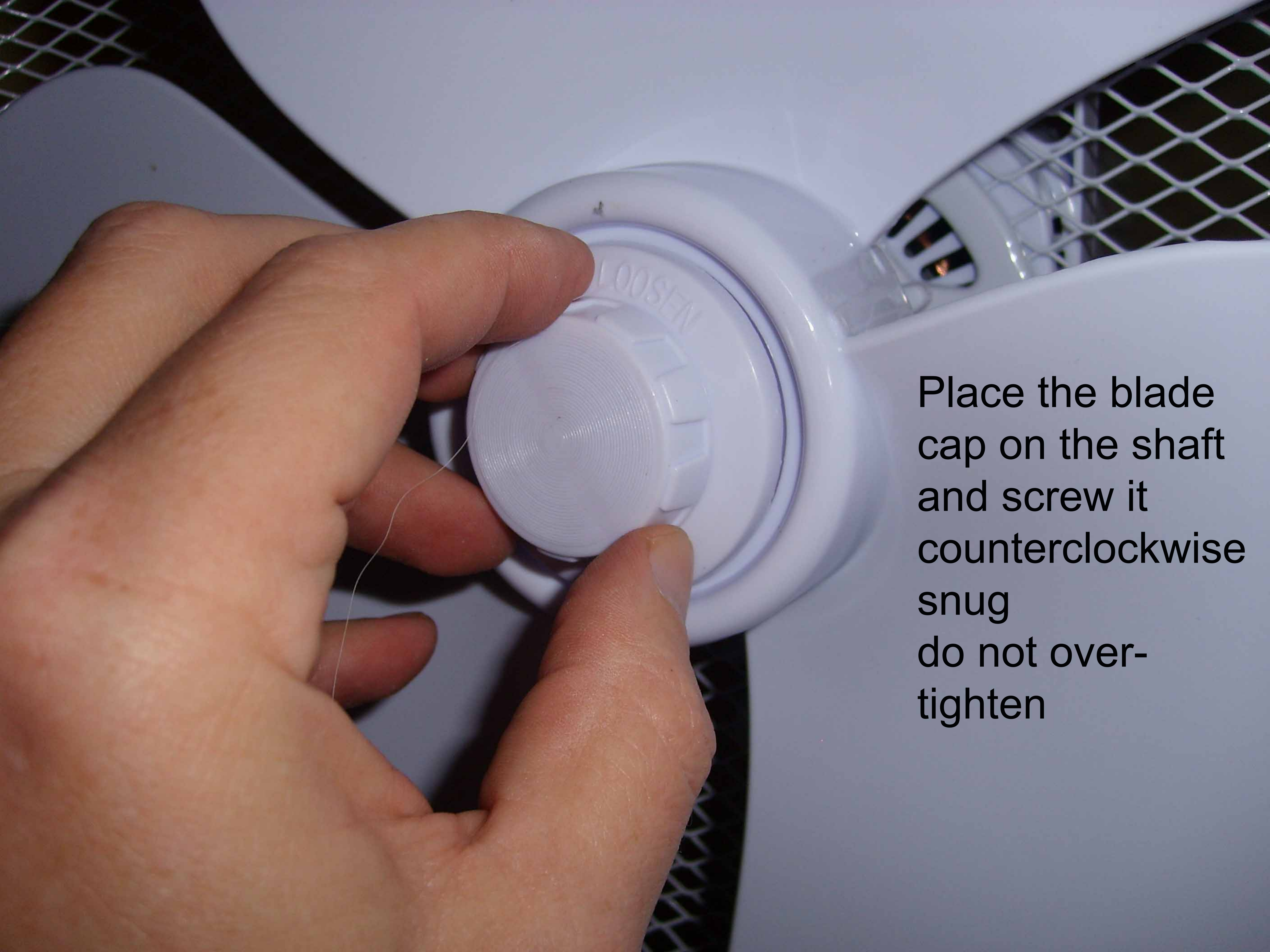


Replace the Grill Nut and Tighten



Place the Fan Blade over the motor shaft and make sure to line the up the notch with the notch on the blade push it back firmly



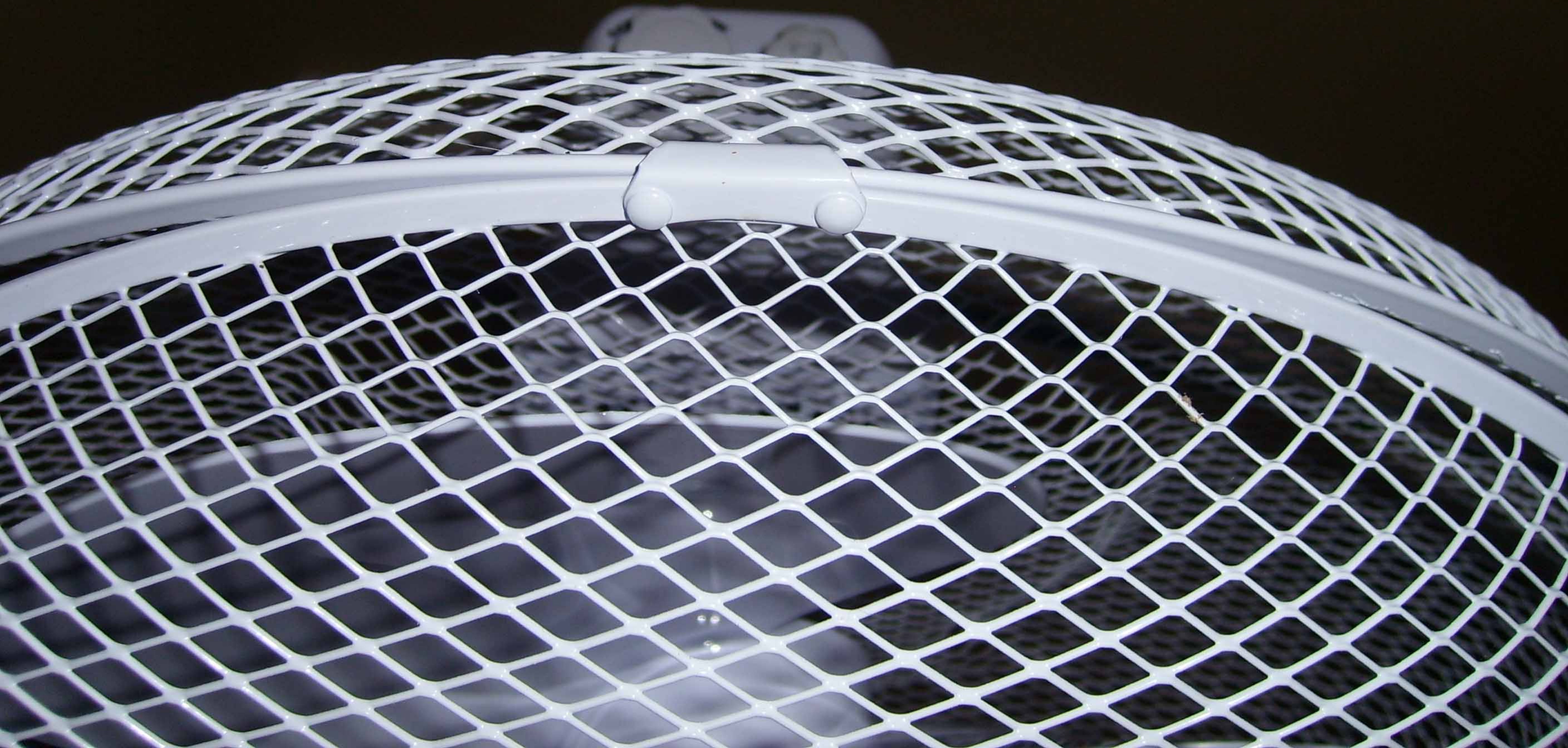



Place the blade cap on the shaft and screw it counterclockwise snug do not over-tighten

open all the grill
fastening clips



Hang the front safety grill on back grill as shown



A close-up photograph of a white plastic mesh grill, likely from a washing machine. The mesh is composed of a grid of small, diamond-shaped openings. A white plastic clip is attached to the right edge of the mesh, securing it to a vertical frame. The background is a dark, solid color.

Close all the
grill clips
your done